

MAY 18 2018

Index No. G-17

CERTIFICATE OF LOCATION OF GOVERNMENT CORNER

EAST QUARTER Corner of Section 10, Township 108 N, Range 39 W

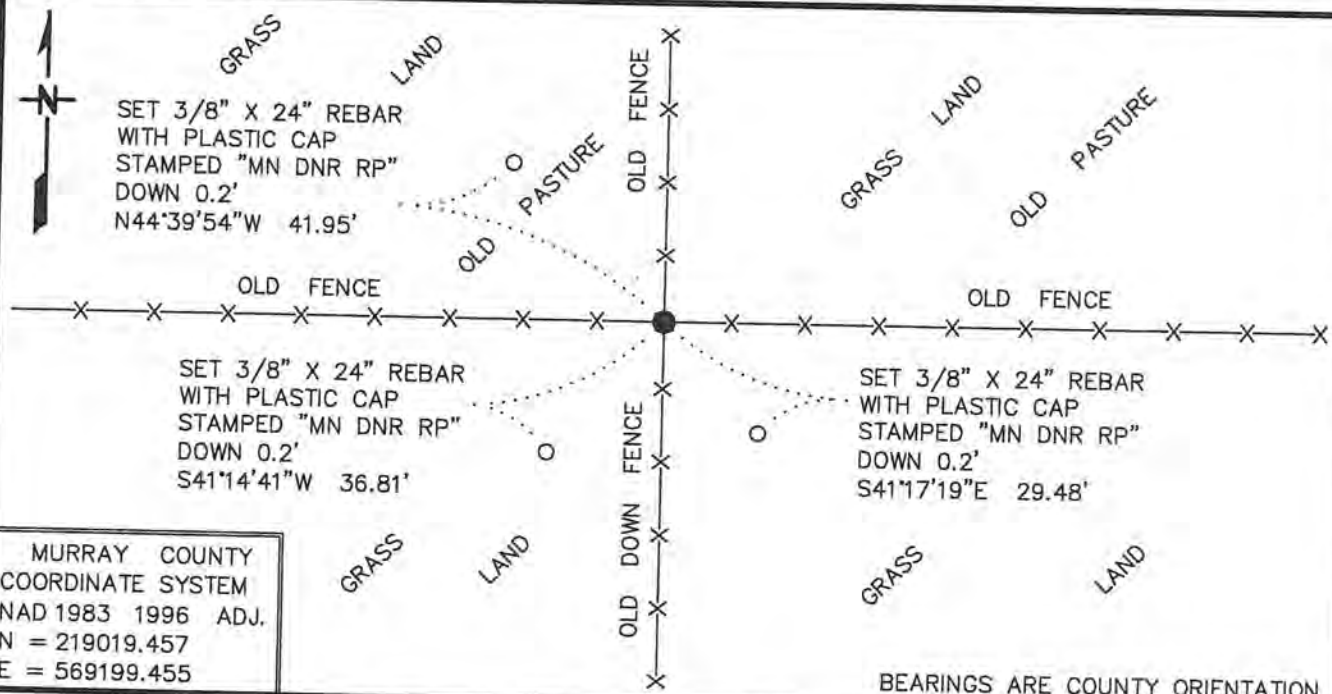
5TH Principal Meridian, State of Minnesota, County of MURRAY

At the corner location shown on the sketch:

On 10/17/2017 found a OLD ROTTEN WOOD CORNER FENCE POST
DATE

left monument as found, lowered monument, removed monument (explain)

On 10/17/2017 Placed a 3/8" X 24" REBAR WITH PLASTIC CAP STAMPED "MN DNR LS 17003", FLUSH. IN PLACE OF FOUND OLD ROTTEN WOOD CORNER FENCE POST
DATE



Statement of evidence for this corner location is on back of this page.

FEBRUARY 2018
WMA 02039

I hereby certify that this plan, specification, or report was prepared by me or under my direct supervision and that I am a duly Licensed Land Surveyor under the laws of the State of Minnesota.

SIGNATURE Bruce W. Shepherd
BRUCE W SHEPHERD

DATE 5/15/18

License Number 17003

The DNR Division of Lands and Minerals contacted the following for survey information:

Website - mngeo.state.mn.us for GLO plat and field notes

Website - murray-countymn.com for section and quarter section corner information

Murray County Recorder's Office

Zieske Land Surveying, Inc. of Windom

Madsen Land Surveying, Inc. of Fairmont

Bonnema Runke Stern, Inc. of Willmar

1861 U.S. General Land Office notes, obtained from mngeo.state.mn.us, show the corner marked with a post, in a mound.

No Surveyor's Record Book A, page 249 obtained from the Murray County Recorder's
Date Office, which is also on murray-countymn.com shows a government corner at the corner. The corner is shown:

2642.2 feet from the northeast corner of Section 10

2642.2 feet from the northeast corner of Section 15

Survey states – *see page 240*. The following note is on page 240:

Surveyed by D.L. Bigham, County Surveyor of Redwood County, Minn. June 1901. Plotted by him July 5, 1901.

Original plat on file in office of Town Clerk of Holly Township.

This record made by J.R. Johnston, Co. Surveyor of Murray Co from original plat. June 12, 1915.

No Surveyor's Record Book A, page 250 obtained from the Murray County Recorder's
Date Office, which is also on murray-countymn.com, shows a government corner at the corner. The corner is shown:

2642.2 feet from the northeast corner of Section 10

2642.2 feet from the northeast corner of Section 15

2647.0 feet from the northeast corner of Section 15

Survey states – *see page 240*. The following note is on page 240:

Surveyed by D.L. Bigham, County Surveyor of Redwood County, Minn. June 1901. Plotted by him July 5, 1901.

Original plat on file in office of Town Clerk of Holly Township.

This record made by J.R. Johnston, Co. Surveyor of Murray Co from original plat. June 12, 1915.

1915 June 19, Surveyor's Record Book A, page 278 obtained from the Murray County Recorder's Office, which is also on murray-countymn.com, contains a survey by J.R. Johnston, Murray County Surveyor. Survey shows corner but does not indicate what kind of monument was found or set and no distances are shown to it. The corner was used to establish the center of Section 10.

East Quarter Corner of Section 10, Township 108 North, Range 39 West
Page 2 of 2

- 2004 August, a Certificate of Survey in the NE¼ of Section 10, by Perry L. Zieske, PLS 23008, obtained from Zieske Land Surveying, Inc, shows corner but a description of what kind of monument was found or set is not given. The corner is shown:
2661.52 feet from the northeast corner of Section 10
- 2017 October 17, the DNR Division of Lands and Minerals dug and probed for a stone in the area of the corner being the intersection of very old up right fences east, west, and north and a very old down fence south. A diligent and thorough search was made for a stone but only found several small and scattered ones and an old rotten wood corner fence post. Then set a ¾ inch by 24 inch rebar with a plastic cap stamped "MN DNR LS 17003" in the center of an old rotten wood corner fence post and found it to be:
2641.93 feet from the northeast corner of Section 15

Analysis of the above information led the DNR Division of Lands and Minerals to conclude that the ¾ inch by 24 inch rebar with a plastic cap stamped "MN DNR LS 17003" set in the center of an old rotten wood corner fence post marks the obliterated position of the corner.